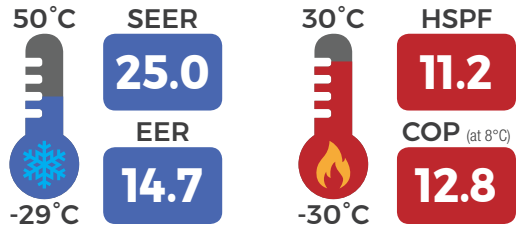


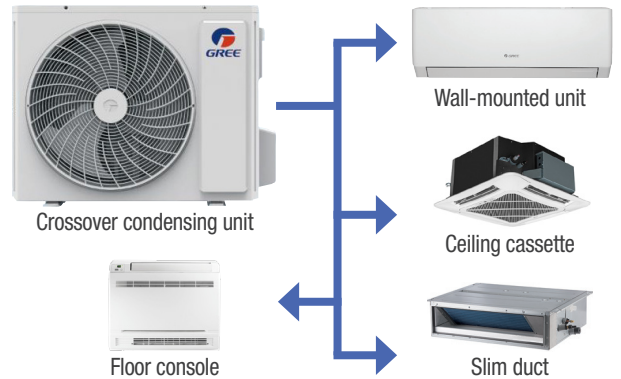


SINGLE ZONE SYSTEM CROSSOVER



FLEXIBILITY, EFFICIENCY AND RELIABILITY AT YOUR SERVICE

The **Crossover** series is the first **GREE** product line to allow single-zone residential installation with various types of indoor units, offering a variety of solutions for your home or office.



HEATING DOWN TO -30 °C AND COOLING, TO -29 °C

As one of the only heat pumps that can heat or cool in such extreme temperatures, the **Crossover** series is designed to be your comfort ally in our cold Canadian climates. It is the ideal solution for your residential, commercial, or even server room applications



FEATURES AND BENEFITS:

DEHUMIDIFYING	COMPACT DESIGN	INTELLIGENT PREHEATING	GRADUAL STARTUP	MISE EN MARCHÉ À BASSE TENSION	SLEEP MODE	SELF-DIAGNOSIS	INTELLIGENT DEFROSTING	LED DISPLAY	TIMER	CONTROL LOCK		
TURBO MODE	MULTIPLE FAN SPEED	WIFI CONTROL	WIRED CONTROLLER	<table border="0"> <tr> <td> INCLUDED FUNCTION</td> <td> OPTIONAL FUNCTION</td> </tr> </table>							INCLUDED FUNCTION	OPTIONAL FUNCTION
INCLUDED FUNCTION	OPTIONAL FUNCTION											



Crossover condensing unit



Remote control (YAP1F)



Wired controller (XE-71)



Crossover wall-mounted unit



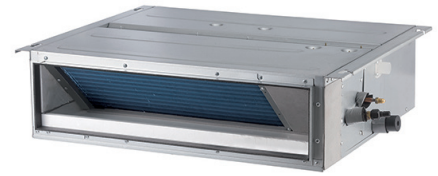
Temperature display hidden on the shiny surface.

- G10 Inverter technology
- WiFi control (Crossover wall-mount unit only)
- Precise airflow control
- Low voltage start-up
- Fins with anti-corrosion coating
- Multiple fan speed
- Adjustable LED display
- Washable dust filters
- Heavy gauge steel cabinet
- Eco-friendly R410A refrigerant

CROSSOVER			9000	12000	18000	24000
Indoor Unit:			GWH09AGC-D3DNA2B/I	GWH12AGC-D3DNA2A/I	GWH18AGD-D3DNA2B/I	GWH24AGE-D3DNA2A/I
Outdoor Unit:			GWH09AGC-D3DNA1B/O	GWH12AGC-D3DNA1A/O	GWH18AGD-D3DNA1B/O	GWH24AGE-D3DNA1A/O
AHRI Code:			206395963	206395961	206395962	206335352
Power Supply		V/Hz/Ph	208-230 / 60 / 1			
SYSTEM PERFORMANCE						
Capacity	Cooling	BTU/hr	9100 (2457 – 10748)	12000 (3071 – 14100)	18000 (5118 – 23202)	22000 (3400 – 28500)
	Heating	BTU/hr	11000 (2593 – 13307)	12000 (3071 – 15500)	18200 (5800 – 23543)	24000 (4300 – 33600)
Power Input	Cooling	W	618 (100 – 1030)	923 (220 – 1400)	1384 (90 – 2300)	1692 (300 – 2600)
	Heating	W	TBD	TBD	TBD	TBD
SEER		BTU/W*hr	25.3	25.0	23.0	23.0
EER		BTU/W*hr	14.7	13.0	13.0	13.0
HSPF		BTU/W*hr	11.2	11.5	11.0	11.0
COP		W/W	3.59 (12.79)	3.63 (12.32)	3.79 (12.45)	3.73 (13.0)
Energy Star®		—	YES	YES	YES	YES
Minimum Circuit Ampacity (MCA)		A	9	10	15	16
Maximum Overcurrent Protection (MOP)		A	15	15	20	25
INDOOR UNIT SPECIFICATIONS			GWH09AGC-D3DNA2B/I	GWH12AGC-D3DNA2A/I	GWH18AGD-D3DNA2B/I	GWH24AGE-D3DNA2A/I
Moisture Removal Capacity		L/hr (pt/hr)	0.80 (1.69)	1.40 (2.96)	1.80 (3.80)	2.40 (5.07)
Airflow Volume		m³/hr (CFM)	600/550/500/450/400/350/330 (353/324/294/265/235/206/194)	680/620/560/490/450/420/390 (400/365/330/288/265/247/230)	1050/900/800/750/700/650/600 (618/530/471/441/412/383/353)	1400/1000/970/850/800/750/680 (824/588/571/500/471/441/400)
Sound Pressure Level		dB(A)	40 / 37 / 35 / 32 / 29 / 26 / 25	43 / 38 / 35 / 33 / 31 / 29 / 27	46 / 42 / 40 / 38 / 36 / 34 / 31	53 / 45 / 44 / 41 / 39 / 37 / 35
Dimensions	Width	mm (in)	825 (32-1/2)	825 (32-1/2)	982 (38-5/8)	1075 (42-5/16)
	Height	mm (in)	293 (11-1/2)	293 (11-1/2)	311 (12-1/4)	333 (13-1/8)
	Depth	mm (in)	196 (7-11/16)	196 (7-11/16)	221 (8-3/4)	246 (9-11/16)
Weight	Net	kg (lb)	9.5 (20.9)	9.5 (20.9)	13.5 (29.8)	16.0 (35.3)
	Gross	kg (lb)	11.5 (25.4)	11.5 (25.4)	16.0 (35.3)	19.0 (41.9)
OUTDOOR UNIT SPECIFICATIONS			GWH09AGC-D3DNA1B/O	GWH12AGC-D3DNA1A/O	GWH18AGD-D3DNA1B/O	GWH24AGE-D3DNA1A/O
Ambient Temperature	Cooling	C° (F°)	-29to 50 (-20 to 122)			
	Heating	C° (F°)	-30 to 30 (-22 to 86)			
Sound Pressure Level		dB(A)	52	52	57	59
Dimensions	Width	mm (in)	848 (33-3/8)	899 (35-3/8)	965 (38)	1003 (39-1/2)
	Height	mm (in)	596 (23-1/2)	596 (23-1/2)	700 (27-9/16)	790 (31-1/8)
	Depth	mm (in)	320 (12-9/16)	378 (14-7/8)	396 (15-9/16)	427 (16-13/16)
Weight	Net	kg (lb)	33.5 (73.9)	38 (83.8)	47 (103.6)	56.5 (124.6)
	Gross	kg (lb)	36.5 (80.5)	41.0 (90.4)	51.5 (113.6)	61.5 (135.6)
REFRIGERATION SYSTEM						
Suction Line Size		mm (in)	ø 9.52 (3/8)	ø 12.70 (1/2)	ø 15.88 (5/8)	ø 15.88 (5/8)
Liquid Line Size		mm (in)	ø 6.35 (1/4)	ø 6.35 (1/4)	ø 6.35 (1/4)	ø 6.35 (1/4)
Standard Pipe Length		m (ft)	7.5 (24.6)	7.5 (24.6)	7.5 (24.6)	7.5 (24.6)
Maximum Pipe Length		m (ft)	15 (49.2)	20 (65.6)	30 (98.4)	30 (98.4)
Maximum Pipe Elevation		m (ft)	10 (32.8)	10 (32.8)	20 (65.6)	20 (65.6)
Refrigerant Type / Charge		kg (oz)	R410A / 1.03 (36.3)	R410A / 1.34 (47.3)	R410A / 1.6 (56.4)	R410A / 1.8 (63.5)

OTHER INDOOR UNIT COMBINATIONS

The **Crossover** outdoor unit is also compatible with **Free Match** indoor units such as ductwork and ceiling cassettes, as well as the **LOMO 23** wall-mount indoor unit, thus meeting a variety of demands and providing a good solution to inventory problems.



WALL-MOUNTED UNIT

The **LOMO 23** Series ductless wall-mounted unit has a compact design that blends well with any décor, the perfect option for your home or office needs.

CEILING CASSETTE

The ceiling cassette offers discreet performance through an innovative design. It is suitable for any room and can be easily installed in ceilings, leaving only a decorative grille visible.

SLIM DUCT

The low static slim duct offers an extremely discreet and compact solution. In addition, this indoor unit frees up a maximum amount of space to minimize the impact on decor.



Remote control
YV1FB7F (included)



Thermostat filaire
XE-71 (en option)



Remote control
YT1FF (included)



Wired controller
XK-19 (in option)



Wired controller
XK-19 (in option)

- Multiple fan speed
- Swing louver control
- Turbo mode
- Control lock
- Dry coil mode for anti-mildew protection
- Recovery after a power failure
- Washable dust filters

- Decorative grille (included)
- 4-way discharge air
- Multiple fan speed
- Control lock
- Swing louver control
- Recovery after a power failure
- Internal condensate drain pump
- Sentry float switch
- Washable dust filters

- Low static pressure capability
- Alternate return air from bottom or rear
- Internal condensate drain pump
- Sentry float switch
- Slim line construction (7-7/8" high)

LOMO 23 WALL-MOUNTED UNIT			9000	12000	18000	24000
Indoor Unit:			GWH09QC-D3DNA5D/I	GWH12QC-D3DNA5D/I	GWH18QD-D3DNA5G/I	GWH24QE-D3DNA5D/I
Outdoor Unit:			GWH09AGC-D3DNA1B/O	GWH12AGC-D3DNA1A/O	GWH18AGD-D3DNA1B/O	GWH24AGE-D3DNA1A/O
AHRI Code:			207318103	206791548	TBD	207169058
Power Supply	V/Hz/Ph	208-230 / 60 / 1				
SYSTEM PERFORMANCE						
Capacity	Cooling	BTU/hr	9100	12000	TBD	22000
	Heating	BTU/hr	11000	12000	TBD	24000
SEER		BTU/W*hr	25.3	23.0	TBD	23.0
EER		BTU/W*hr	14.7	13.0	TBD	13.0
HSPF		BTU/W*hr	11.2	11.0	TBD	11.0
Energy Star®		—	YES	YES	TBD	YES
INDOOR UNIT SPECIFICATIONS			GWH09QC-D3DNA5D/I	GWH12QC-D3DNA5D/I	GWH18QD-D3DNA5G/I	GWH24QE-D3DNA5D/I
Moisture Removal Capacity	L/hr (pt/hr)		0.80 (1.69)	1.40 (2.96)	1.80 (3.80)	2.00 (4.23)
Airflow Volume	m³/hr (CFM)		640 / 490 / 410 / 290 (377 / 288 / 241 / 171)	680 / 490 / 410 / 290 (400 / 288 / 241 / 171)	950 / 830 / 700 / 570 (559 / 488 / 412 / 335)	1200 / 1100 / 1000 / 900 (706 / 647 / 589 / 530)
Sound Pressure Level	dB(A)		43 / 39 / 35 / 29	45 / 39 / 35 / 29	47 / 43 / 40 / 39	48 / 44 / 40 / 36
Dimensions	Width	mm (in)	845 (33-1/4)	845 (33-1/4)	970 (38-3/16)	1078 (42-7/16)
	Height	mm (in)	289 (11-3/8)	289 (11-3/8)	300 (11-13/16)	325 (12-13/16)
	Depth	mm (in)	209 (8-1/4)	209 (8-1/4)	224 (8-13/16)	246 (9-11/16)
Weight	Net	kg (lb)	10 (22.05)	10 (22.05)	12.5 (27.6)	15.5 (34.2)
	Gross	kg (lb)	12 (26.46)	12 (26.46)	15.5 (34.2)	19 (41.9)

CEILING CASSETTE			12000	18000	24000
Indoor Unit:			GKH(12)BB-D3DNA3A/I	GKH(18)BB-D3DNA3A/I	GKH(24)BC-D3DNA4A/I
Outdoor Unit:			GWH12AGC-D3DNA1A/O	GWH18AGD-D3DNA1B/O	GWH24AGE-D3DNA1A/O
AHRI Code:			206913030	207178474	206913033
Power Supply		V/Hz/Ph	208-230 / 60 / 1		
SYSTEM PERFORMANCE					
Capacity	Cooling	BTU/hr	12000	18000	22000
	Heating	BTU/hr	12000	18200	24000
SEER		BTU/W*hr	24.0	20.0	21.0
EER		BTU/W*hr	13.0	10.25	12.0
HSPF		BTU/W*hr	11.3	10.0	11.5
Energy Star®		—	YES	NO	NO
INDOOR UNIT SPECIFICATIONS			GKH(12)BB-D3DNA3A/I	GKH(18)BB-D3DNA3A/I	GKH(24)BC-D3DNA4A/I
Moisture Removal Capacity	L/hr (pL/hr)		1.40 (2.96)	1.80 (3.80)	2.50 (5.28)
Airflow Volume	m³/hr (CFM)		600 / 496 / 426 (353 / 292 / 251)	600 / 496 / 426 (353 / 292 / 251)	1180 / 865 / 790 (694 / 509 / 465)
Sound Pressure Level	dB(A)		46 / 44 / 42	46 / 44 / 42	39 / 37 / 35
Rated External Static Pressure	Pa (in.w.g)		570 (22-3/8)	570 (22-3/8)	840 (33-1/8)
Dimensions	Width	mm (in)	570 (22-3/8)	570 (22-3/8)	840 (33-1/8)
	Height	mm (in)	230 (9-1/16)	230 (9-1/16)	240 (9-3/8)
	Depth	mm (in)	18 (39.6)	18 (39.7)	28 (61.7)
Weight	Net	kg (lb)	23 (50.7)	23 (50.7)	35 (77.2)
	Gross	kg (lb)	27 (59.5)	29 (63.9)	41 (90.4)
DECORATIVE GRILLE SPECIFICATIONS			TA03	TA03	TB04
Dimensions	Width	mm (in)	650 (25-9/16)	650 (25-9/16)	950 (37-9/16)
	Height	mm (in)	650 (25-9/16)	650 (25-9/16)	950 (37-9/16)
	Depth	mm (in)	50 (2)	50 (2)	60 (2-3/8)
Weight	Net	kg (lb)	2.5 (5.5)	2.5 (5.5)	6.5 (13.2)
	Gross	kg (lb)	3.65 (6.6)	3.65 (6.6)	10 (22.0)

LOW STATIC SLIM DUCT			9000	12000	18000	24000
Indoor Unit:			GFH(09)EA-D3DNA1A/I	GFH(12)EA-D3DNA1A/I	GFH(18)EA-D3DNA1A/I	GFH(24)EA-D3DNA1A/I
Outdoor Unit:			GWH09AGC-D3DNA1B/O	GWH12AGC-D3DNA1A/O	GWH18AGD-D3DNA1B/O	GWH24AGE-D3DNA1A/O
AHRI Code:			207168479	206913029	207178473	206913032
Power Supply		V/Hz/Ph	208-230 / 60 / 1			
SYSTEM PERFORMANCE						
Capacity	Cooling	BTU/hr	9100	12000	18000	22000
	Heating	BTU/hr	11000	12000	18200	24000
SEER		BTU/W*hr	21.0	20.5	15.2	20.0
EER		BTU/W*hr	14.2	11.8	8.85	12.5
HSPF		BTU/W*hr	10.5	10.6	9.7	10.0
Energy Star®		—	YES	NO	NO	NO
INDOOR UNIT SPECIFICATIONS			GFH(09)EA-D3DNA1A/I	GFH(12)EA-D3DNA1A/I	GFH(18)EA-D3DNA1A/I	GFH(24)EA-D3DNA1A/I
Moisture Removal Capacity	L/hr (pL/hr)		0.80 (1.69)	1.40 (2.96)	1.80 (3.80)	2.50 (5.28)
Airflow Volume	m³/hr (CFM)		450 / 300 / 250 (265 / 177 / 147)	500 / 400 / 300 (294 / 235 / 177)	700 / 600 / 500 (412 / 353 / 294)	1000 / 750 / 550 (589 / 441 / 324)
Sound Pressure Level	dB(A)		37 / 34 / 31	39 / 35 / 32	41 / 37 / 33	42 / 38 / 34
Rated External Static Pressure	Pa (in.w.g)		10 (0.04)	10 (0.04)	10 (0.04)	15 (0.06)
Dimensions	Width	mm (in)	700 (27-3/4)	700 (27-3/4)	900 (35-3/8)	1100 (43-3/8)
	Height	mm (in)	615 (24-1/4)	615 (24-1/4)	615 (24-1/4)	615 (24-1/4)
	Depth	mm (in)	200 (7-7/8)	200 (7-7/8)	200 (7-7/8)	200 (7-7/8)
Weight	Net	kg (lb)	22 (48.5)	23 (50.7)	27 (59.5)	31 (68.3)
	Gross	kg (lb)	27 (59.5)	29 (63.9)	36 (79.4)	41 (90.4)



GREE Canada products are subject to continuous improvements. GREE Canada reserves the right to modify product design, specifications and information without notice and without incurring obligations.

Authorized dealer